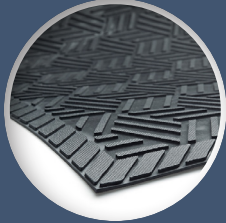


# Winter-Ready Floors

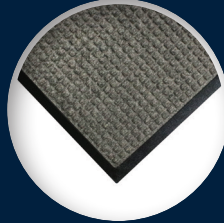
Protect your floors from winter weather with a 3-Mat Entry System.

## SuperScrape Plus® Outdoor Scaper Mat



To protect your floors from the very start, use a SuperScrape Plus mat at the entrance of your facility to effectively remove and trap dirt before it can be tracked further. These mats feature multi-direction surface cleats and drainable borders that filter water away. The lightweight flexible design ensures easy handling and cleaning, and SuperScrape Plus mats are certified high-traction by the National Floor Safety Institute (NFSI).

## WaterHog® Indoor/Outdoor Entrance Mat



The next step to safe and clean floors is a WaterHog mat. The bi-level surface scrapes dirt and moisture from shoes, trapping it beneath shoe level, while the water dam border holds moisture keeping it off your floors. Reinforced rubber nubs prevent the pile from crushing, and the PET surface is made from 100% post-consumer recycled plastic drink bottles. The standard WaterHog mat features a waffle pattern.

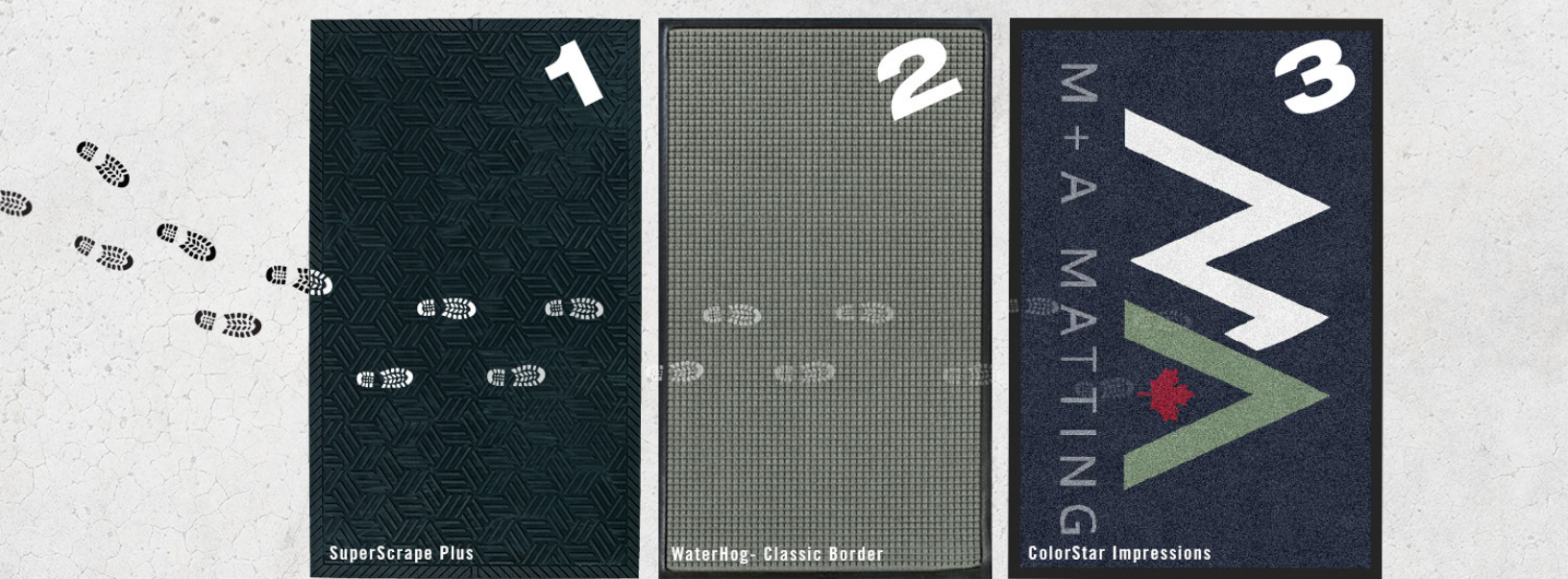
Certain colors and sizes are stocked in Mississauga for fast delivery: Charcoal in 3x5, 3x10, and 4x6 with a classic rubber border and 78-mil smooth or universal cleated backing

## ColorStar® Solid Color & Logo Carpeted Mat



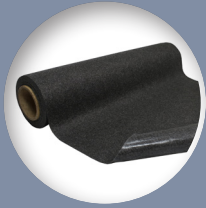
Carpeted (wiper) mats finish off this trifecta by wiping that last bit of dust and moisture off your shoes. M+A offers several logo mat options to aid in the promotion of your company like our ColorStar Impressions mats. Fine details, shading, and 3D images are achievable. Solid ColorStar mats are also available with the same fade-resistant, stain-resistant, eco-friendly PET surface.

Certain colors and sizes are stocked in Mississauga for fast delivery: Charcoal in 3x5, 3x10, 4x6, and 4x8 with smooth SBR



# 3 - MAT ENTRY SYSTEM

## Slip-Resistant Matting



Sure Stride matting is the secret weapon to preventing slips, trips, and falls caused by moisture. It is low-profile with adhesive backing to ensure it stays in place. Sure Stride will perform for up to 4 months under normal use. The ability to cut individual mats as needed makes it ideal for use in areas prone to excess moisture and spills, as well as during inclement weather. The increase in rain and mud leads to several challenges that Sure Stride can help combat.

### Sure Stride®

Indoor Matting By the Roll

#### Multi-Use

- Moisture barrier keeps liquids from soaking through
- Adhesive backing keeps mat in place
- Certified high-traction by the National Floor Safety Institute (NFSI)
- Anti-microbially treated
- Can be left in place during daily cleaning (vacuuming, mopping, etc.)
- Available in 3' x 100' and 2' x 25' rolls for an easy to manage and easy to store matting solution



Place it behind your entrance matting system during inclement weather to combat the increase in moisture.



Use in bathrooms, near the sinks and urinals, to absorb liquids while the anti-microbial treatment reduces odors.

